

# RING

DESIGNED BY ÉMILIE CATHELINÉAU





À la fois inspirée des années 60 et intemporelle, la suspension bicolore *Ring* est montée d'une pièce « bijou » en laiton poli. Définissez ses tonalités selon l'effet décoratif recherché.







At once inspired by the 60's but also timeless, the two-toned pendant *Ring* is assembled with an imitated polished brass "jewel". Characterize its shades in accordance to the style you are looking for.



Ring SG/SB

<b>Finitions Finishes</b>	<b>Bicolore – Bicolor</b> ① / ②			
	 Graphite satiné <b>SG</b> / Laiton satiné <b>SB</b> Satin graphite / Satin brass	 Laiton satiné <b>SB</b> / Graphite satiné <b>SG</b> Satin brass / Satin graphite	 Graphite satiné <b>SG</b> / Nickel satiné <b>SN</b> Satin graphite / Satin nickel	 Nickel satiné <b>SN</b> / Graphite satiné <b>SG</b> Satin nickel / Satin graphite

<b>Finitions Finishes</b>	<b>Uni – Unicolor</b>			
	 Laiton satiné <b>SB</b> Satin brass	 Graphite satiné <b>SG</b> Satin graphite	 Nickel satiné <b>SN</b> Satin nickel	 Cuivre satiné <b>SC</b> Satin copper

<b>Matériaux Material</b>	Laiton massif	Diffuseur en polycarbonate
	Solid Brass	Polycarbonate diffuser

**Description  
Features**

Le modèle standard n'a pas de câble. Il est fixe sur un tube de 300 mm de long, ce qui donne une hauteur totale de 440 mm. Si vous souhaitez une hauteur supérieure à 440 mm, il est possible de réaliser une version « sur câble ». La longueur standard des câbles est de 2 mètres mais elle peut être diminuée à l'installation.

The standard *Ring* light does not come with a cable but only with a 300mm (11,8") brass stem with a total drop of 440mm (17,3"). For lengths over 440mm (17,3") an adjustable transparent cable is added between the brass stem and the canopy in a standard length of 2 meters (79") and can be adjusted to less during installation.

<b>Source Lamping</b>	2 modules de LEDS intégrées : 2 x 1700lm / 2700°K	Alim. électronique intégrée dans le pavillon
	Diffusion de la lumière directe et indirecte	Variation. Veuillez nous contacter

2 integrated LEDs of 1700lm / 2700°K  
Diffuses light from the top and the bottom

Integrated power supply in canopy  
Dimming. Please, contact us

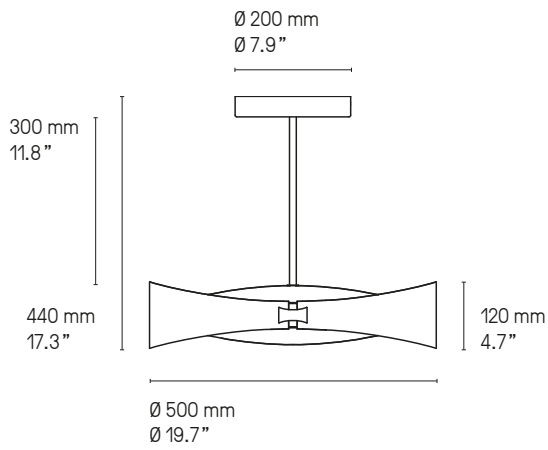


<b>Designer</b>	Émilie Cathelineau
-----------------	--------------------

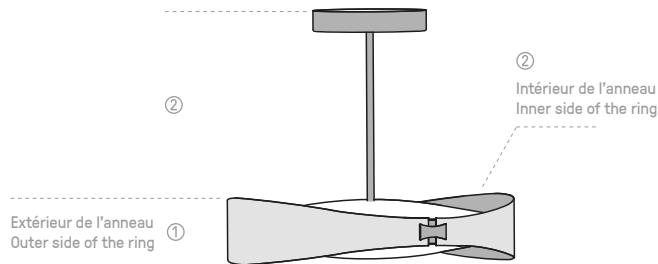
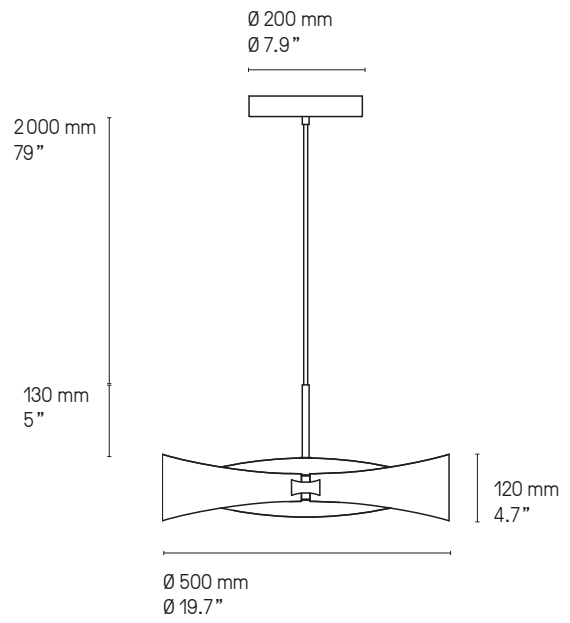


Ring SG/SB

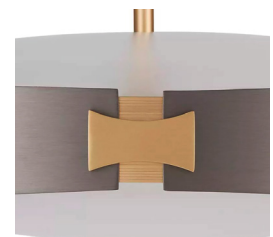
**Version fixe – Stem version**



**Version câble – Cable version**



Ring SG/SB



En standard, les 2 « bijoux » sur le côté du produit sont en finition ② polie. Si vous préférez une finition satinée, merci de le préciser.

The 2 small brass parts on each side of the light always come in a polished ② finish but can be in satin if specified.

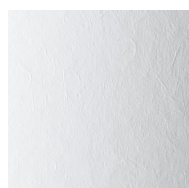
## NUANCIER - FINISH OPTIONS



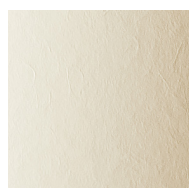
### LAITON - BRASS

- |                                     |   |
|-------------------------------------|---|
| ① Laiton satiné<br>SB Satin brass   | ② Graphite satiné<br>SG Satin graphite  |
| ③ Nickel satiné<br>SN Satin nickel  | ④ Cuivre satiné<br>SC Satin copper      |
| ⑤ Laiton poli<br>PB Polished brass  | ⑥ Graphite poli<br>PG Polished graphite |
| ⑦ Nickel poli<br>PN Polished nickel | ⑧ Cuivre poli<br>PC Polished copper     |

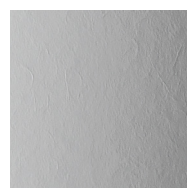
### ABAT-JOURS - LAMPSHADES



Drop Paper® 100



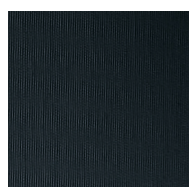
Drop Paper® 101



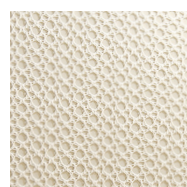
Drop Paper® 103



Chinette blanche  
White chinette

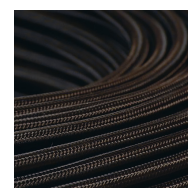


Chinette noire  
Black chinette



Duke  
Duke

### CÂBLES - CABLES



Tissu noir  
Black textile

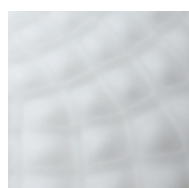


Tissu or  
Gold textile

### VERRERIE - GLASS



Opale  
Opal



Opale et écaille  
Opal and patterned



Claire et écaille  
Clear and patterned



© Yannick Labrousse

## CVL LUMINAIRES

79 ROUTE DE LA CHEVALLERIE – 49770 LONGUENÉE-EN-ANJOU – FRANCE

TEL. +33 (0) 2 41 32 67 54

EMAIL : CONTACT@CVL-LUMINAIRES.FR

**WWW.CVL-LUMINAIRES.FR**

Brand identity & art direction: [POOL](#) Layout & production supervision: [deuxpointdeux](#)  
Texts: [Valérie Marion](#) Translation: [CVL](#) Photos: [Garnier Studios](#) except when mentioned otherwise 3D: [CVL](#) except when mentioned otherwise

Make sure to download our latest catalogue [here](#)